

## Type description for retractable supply post MS SE 30A Standard

### Technical data

Degree of protection:	IP 44 for electrical sockets, on request up to IP 65 IP 65 for distributors
Protection equipment:	earth conductor class 1
Nominal voltage/ frequency:	230/400 V, 50 Hz
Kind of voltage:	TN-S System
Connection value:	approx. 15 kW
Supply cable max. permissible:	5 x 16 mm <sup>2</sup>

### Equipment side A

1 x distributor, 10 partitions  
1 x elcb 40/0,03A, 4-pole  
1 x mcb 16A, B, 3-pole  
2 x mcb 16A, B, 1-pole  
1 x mcb 2A, C, 1-pole (for heating)

### Equipment side B

1 x CEE 16A, 5-pole  
2 x isolated ground receptacles

### Weights

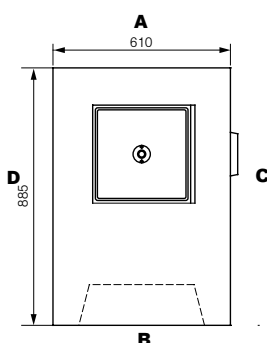
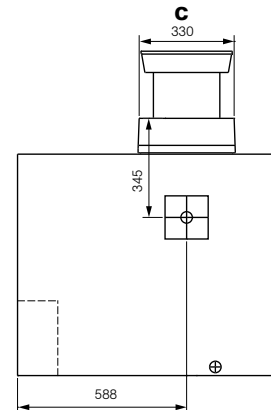
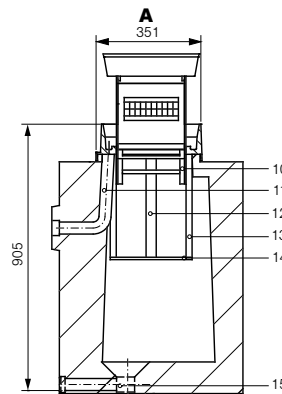
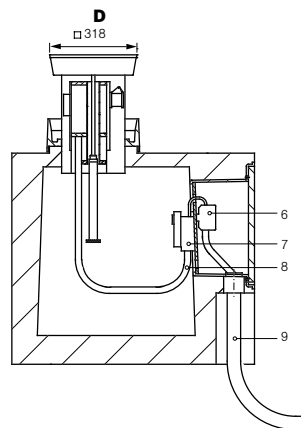
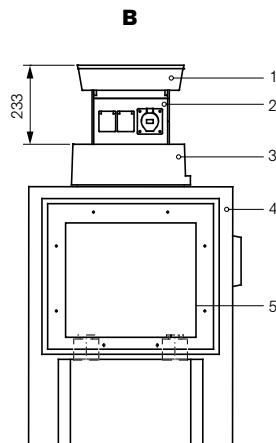
Concrete shaft + Shaft insert:	570 kg
Device column equipped:	30 kg

### Dimensions

Concrete shaft (H x W x D):	795 x 610 x 885 mm
Cover support (incl. sealing compound):	110 mm
Installation depth:	905 mm
Extendible Height:	233 mm
Space for pavement in cover:	50 mm
Load capacity for the paved cover under DIN EN 124:	D 400, 40 t point load
Lifting mechanism:	Threaded spindle
Sewage connections:	2 x DN 40

### Order-No.

**MS SE 30A-Sta-01**



- 1 - Cover
- 2 - Case of insulated material
- 3 - Cover support
- 4 - Concrete shaft
- 5 - Cable connection box
- 6 - Connection clamps
- 7 - Pre-fuse
- 8 - Flexible connection cable
- 9 - Lead in cable  
(to prov. before inst.)

- 10 - Guide
- 11 - surface water drainage
- 12 - Lifting mechanism
- 13 - Frame of guide
- 14 - Bottom support
- 15 - Drainage of shaft

## Submission text for retractable supply post MS SE 30A Standard

**Retractable, practicable, column for connection and distribution of electricity as per the VDE-regulations for open space, soil flushing installation.**

**Load capacity of the paved cover under the provisions of DIN EN 124 - D 400 (40t point load),  
kind of protection IP 44 for electrical sockets, on request up to IP 67,  
kind of protection IP 65 for distributors,**

**consisting of:**

### **Concrete shaft**

Supporting concrete shaft under the provisions of DIN 1045 - B 35 (for traffic loads under the provisions of DIN 1072, bridge class SLW 60) for a protected insertion of the retractable supply post into soil.

There are integrated:

- Cable connection box for the assembly of a connecting module
- two cable lead throughs for the reception of an incoming cable
- C-rail for tension relief of the connection cable
- Thread-connection plug for the installation of the exterior earth contact
- Surface water drainage DN40
- Shaft drainage DN40

### **Shift insertion**

System-oriented, metal insertion of corrosion resistant aluminium  
consisting of:

- Guide frame (corrosion resistant aluminium profiles) as sliding supports for the device column
- Cover support with sealing, pavement frame, drainage, open pipe for surface water drainage
- Bottom support with lifting mechanism (threaded-spindle, spindle-guide and spindle nut)

### **Device column**

Extendable, horizontal case construction out of weather resistant PVC with built-on shift cover of cast aluminium, built-in space of 50 mm for pavement.

The case of insulated material (IP 55) is a self supporting construction and constructed as a rugged and shock resistant device. 2 sides (A+B) are provided for the equipment of the device.

Lead-in by flexible connection cable 5 x 6 mm<sup>2</sup>.

The lifting mechanism with threaded spindle is located in the centre of the device column.

Water-tight-opening of spindle drive through the lid.

Self-regulating heating in the electrical operating room to protect from frost damage and condensation.

### **Electric device modules**

The interior wiring of the devices and the feeding-in are arranged for the TN-S system (as per diagram of connections).  
Wiring for other systems only after technical clarification and written contract.

#### Side A:

- 1 piece of distribution module with transparent cover for 10 partitions
- 1 piece of elcb 40A, 4-pole, 30mA
- 1 piece of mcb 16A, B, 3-pole
- 2 pieces of mcb 16A, B, 1-pole
- 1 piece of mcb LS 2A, C, 1-pole for heating

#### Side B:

- 1 piece of attached electrical outlet CEE 16A, 5-pole
- 2 pieces of isolated ground receptacles

### **Cable connection module KAM 16-1**

PVC device supporting base with series clamps 10-16 mm<sup>2</sup> to feed in or slide on the supply cable.  
Pre-fuse NH 0025A plug-clutch 35A and tension relief for the flexible connection cable.

### **Cable leading on KDF 16-1**

Screwing sockets M40 with shrink-hose for watertight leading in of the connection cable and of the leading-off cable.

### **Crank handle**

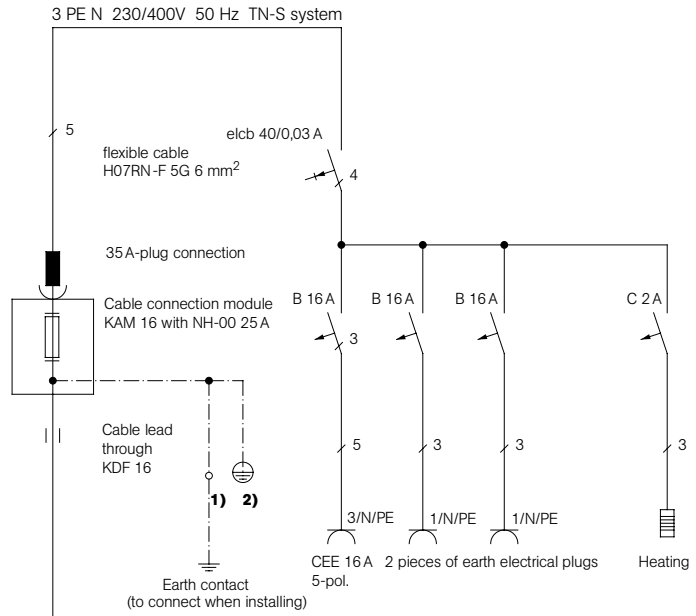
(included in price when ordered)

**Price:** per piece + VAT

**Delivery:** assembled completely, completely wired and checked according to VDE 0100 part 610 including electric plans and installation instructions.  
ex factory, packaging not included

**Delivery time:** min. 6 weeks after receipt of order and technical clarification.

**Survey of diagram of connections for retractable supply post MS SE 30A Standard**



**Lead in cable max. 16 mm<sup>2</sup> (to provide before installing)**

**1) M 10 pin (super refined steel) at the outside of concrete shaft**

**2) Shaft insertion**

Submitted by:

TB SE 30A Standard- E - 04/2011  
 Technical alterations are subject to change without prior notice.  
 Our terms of delivery and payment are in validity.

**Moser Systemelektrik**  
 Erikaweg 1  
 D-78141 Schönwald  
 Telefon 0049(0)77 22/96 97-0  
 Telefax 0049(0)77 22/96 97-11  
 info@moser-systemelektrik.de  
 www.moser-systemelektrik.de