

Type description for retractable supply post MS SE 56 Standard

Technical data

Protection stages:	IP 44 for electrical outlets P 55 for distributors
Protection equipment:	earth contact class 1
Mains voltage/ frequency:	230/400 V, 50 Hz
Kind of voltage:	TN-C-S System
Connection value:	approx. 50 kW
Feed in cable max. permissible:	4 x 50 mm ²

Equipment side A

- 1 distributor, 18 partitions
- 1 CEE 63 A, 5-pol.
- 1 CEE 16 A, 5-pol.
- 3 pieces of earthed outlets
- 1 elcb 63/0,03 A, 4-pol.
- 1 mcb 63 A, B, 3-pol.
- 1 mcb 16 A, B, 3-pol.
- 3 mcb 16 A, B, 1-pol.

Equipment side B

- 1 distributor, 18 partitions
- 1 CEE 32 A, 5-pol.
- 2 CEE 16 A, 5-pol.
- 2 CEE 16 A, 3-pol.
- 1 elcb 63/0,03 A, 4-pol.
- 1 mcb 32 A, B, 3-pol.
- 2 mcb 16 A, B, 3-pol.
- 2 mcb 16 A, B, 1-pol.
- 1 mcb 2 A, C, 1-pol.
(for heating)

Weights

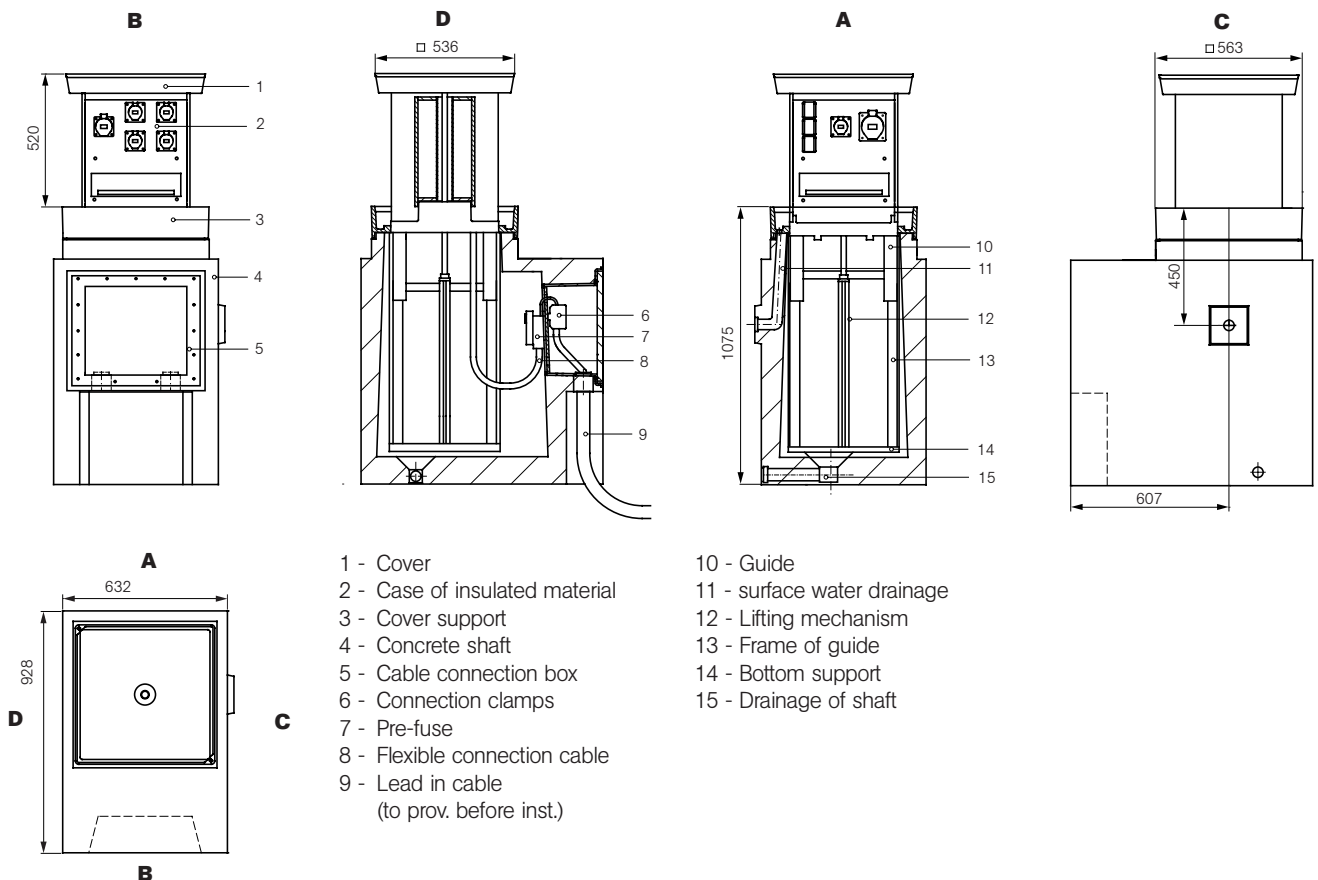
Concrete shaft + Shaft insert:	650 kg
Device column equipped:	75 kg

Dimensions

Concrete shaft (H x W x D):	965 x 632 x 928 mm
Cover support (incl. sealing compound):	110 mm
Installation depth:	1075 mm
Stroke:	520 mm
Space for pavement in cover:	50 mm
Load capacity for the paved cover under DIN EN/ 24:	D 400, 40 t point load
Lifting mechanism:	Thread spindle
Sewage connections:	2 x DN 40

Order-No.

MS SE 56-Sta-03





Submission text for retractable supply post MS SE 56 Standard

Retractable, practicable, column for connection and distribution of electricity as per the VDE-regulations for open space, soil flushing installation.

**Load capacity of the paved cover under the provisions of DIN EN 124 - D 400 (40t point load),
kind of protection IP 44 for earth plugs,
kind of protection IP 55 for distributors**

consisting of:

Concrete shaft

Supporting concrete shaft under the provisions of DIN 1045 - B 35
(for traffic loads under the provisions of DIN 1072, bridge class SLW 60)
for a protected insertion of the retractable supply post into soil.

There are integrated:

- Cable connection box for assembling of a connecting module
- two cable lead through for receiving a cable lead-on
- C-bar for tension relief of the connection cable
- Thread-connection plug for the installation of the exterior earth contact
- Surface water drainage DN 40
- Shaft drainage DN 40.

Shift insertion

Metal insertion of corrosion resistant aluminium

consisting of:

- Guide frame (corrosion resistant aluminium profiles)
as sliding supports for the device column
- Cover support with sealing, pavement frame, drainage,
open pipe for surface water drainage
- Bottom support with lifting mechanism (thread-spindle, spindle-guide and spindle nut).

Device column

Horizontal draw out case construction of weather resistant PVC with
built on shift cover of cast aluminium, built-in space of 50 mm for pavement.

The case of insulated material (IP 55) is a self supporting construction and
constructed as a rugged and shock resistant device.

2 sides (A+B) are provided for the equipment of the device.

Lead-in can be plugged by flexible connection cable 5 x 16 mm².

The lifting mechanism with thread spindle is located in the centre of the device column.

For the operating by crank handle the spindle is passed through the cover and is watertight.

Electric device modules

The interior wiring of the devices and the feeding-in are arranged for the TN-C-S system (as per diagram of connections).

Wiring for other systems only after technical clarification and written contract.

Side A:

- 1 piece of distribution module with covering for 18 partitions
- 1 piece of elcb 63 A, 4-pol., 30 mA
- 1 piece of attached electrical outlet CEE 63 A, 5-pol.
- 1 piece of attached electrical outlet CEE 16 A, 5-pol.
- 3 pieces of electrical earth outlets
- 1 piece of mcb 63 A, B, 3-pol.
- 1 piece of mcb 16 A, B, 3-pol.
- 3 pieces of mcb 16 A, B, 1-pol.

Side B:

- 1 piece of distribution module with covering for 18 partitions
- 1 piece of attached electrical outlet CEE 32 A, 5-pol.
- 2 pieces of attached electrical outlet CEE 16 A, 5-pol.
- 2 pieces of attached electrical outlet CEE 16 A, 3-pol..
- 1 piece of elcb 63 A, 4-pol., 30 mA
- 1 piece of mcb 32 A, B, 3-pol.
- 2 pieces of mcb 16 A, B, 3-pol.
- 2 pieces of mcb 16 A, B, 1-pol.
- 1 piece of mcb 2 A, C, 1-pol. for heating

Cable connection module KAM 50-1

PVC device supporting base with series clamps 25-50 mm² for feeding in or sliding on of lead in cable.

Pre-fuse NH 0080 A plug-clutch 80 A and tension relief for the flexible connection cable.

Cable leading on KDF 50-1

Screwing sockets PG 36 with shrink-hose for watertight leading in of the connection cable and of the leading-off cable.

Crank handle

(included in price when ordered)

Price: per piece + VAT

Delivery: assembled completely, completely wired and checked
ex factory, packaging not included

Delivery

time: min. 6 - 8 weeks after receipt of order and technical clarification.

Survey of diagram of connections for retractable supply post MS SE 56 Standard

