

Type description for retractable supply post MS SE 80 Standard

Technical data

Degree of protection:	IP 44 for electrical sockets, on request up to IP 67
Protection equipment:	IP 55 for distributors
Nominal voltage/ frequency:	earth conductor, class 1
Kind of voltage:	230/400 V, 50 Hz
Connection value:	TN-S System
Supply cable max. permissible:	approx. 130 kW
	5 x 150 mm ²
Equipment side A	Equipment side B
3 x distributors, 10 partitions	3 x distributors, 10 partitions
1 x CEE 125A, 5-pole	1 x CEE 63A, 5-pole
1 x CEE 32A, 5-pole	1 x CEE 32A, 5-pole
1 x CEE 16A, 5-pole	2 x CEE 16A, 5-pole
6 x isolated ground receptacles	6 x isolated ground receptacles
1 x elcb 125/0,3A, 4-pole	1 x elcb 63/0,3A, 4-pole
1 x elcb 63/0,03A, 4-pole	1 x elcb 63/0,03A, 4-pole
1 x mcb 125A, C, 3-pole	1 x mcb 63A, B, 3-pole
1 x mcb 32A, B, 3-pole	1 x mcb 32A, B, 3-pole
1 x mcb 16A, B, 3-pole	2 x mcb 16A, B, 3-pole
5 x mcb 16A, B, 1-pole	4 x mcb 16A, B, 1-pole
1 x fuse, D-02, 63A, 3-pole	1 x mcb 2A, C, 1-pole (for heating)
	1 x fuse, D-02, 63A, 3-pole

Weights

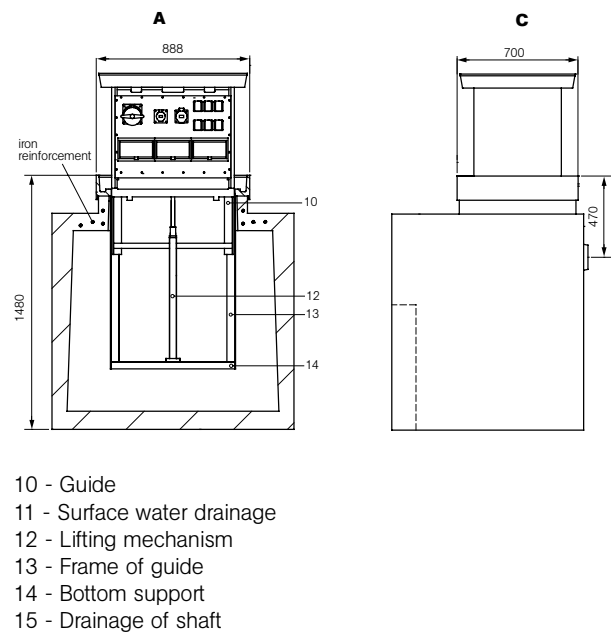
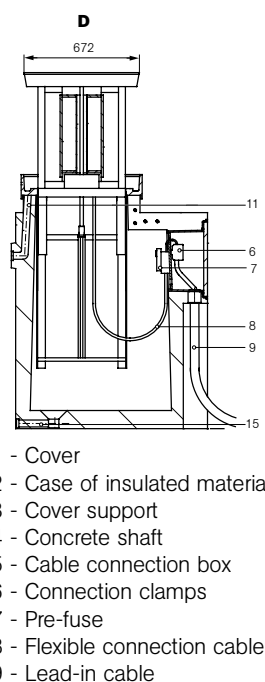
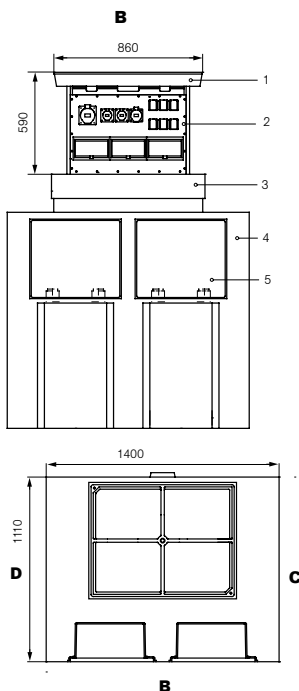
Concrete shaft + Shaft insert:	2120 kg
Device column equipped:	80 kg

Dimensions

Concrete shaft (H x W x D):	1350 x 1400 x 1110 mm
Cover support (incl. sealing compound):	130 mm
Installation depth:	1480 mm
Extendible height:	590 mm
Space for pavement in cover:	50 mm
Load capacity for the paved cover under DIN EN 124:	C 250, 25 t point load
Lifting mechanism:	Threaded spindle
Sewage connections:	2 x DN 40

Order-No.

MS SE 80-Sta-01



- 1 - Cover
- 2 - Case of insulated material
- 3 - Cover support
- 4 - Concrete shaft
- 5 - Cable connection box
- 6 - Connection clamps
- 7 - Pre-fuse
- 8 - Flexible connection cable
- 9 - Lead-in cable
- 10 - Guide
- 11 - Surface water drainage
- 12 - Lifting mechanism
- 13 - Frame of guide
- 14 - Bottom support
- 15 - Drainage of shaft

Submission text for retractable supply post MS SE 80 Standard

Retractable, practicable, column for connection and distribution of electricity according to the VDE-regulations for open space, soil flushing installation.

**Load capacity of the paved cover under the provisions of DIN EN 124 - C 250 (25t point load), kind of protection IP 44 for electrical sockets, on request up to IP 67
kind of protection IP 55 for distributors,**

consisting of:

Concrete shaft

Supporting concrete shaft under the provisions of DIN 1045 - B 35 (for traffic loads under the provisions of DIN 1072, bridge class SLW 60) for a protected insertion of the retractable supply post into soil.

There are integrated:

- 2 pieces of cable connection boxes each one for the assembly of a connection module
- 2 pieces of cable lead throughs within each of the cable connection box
for the reception of an incoming cable
- C-rail for tension relief of the connection cable
- Thread-connection plug for the installation of the exterior earth contact
- Surface water drainage DN 40
- Shaft drainage DN 40

Shift insertion

System-oriented, metal insertion of corrosion resistant aluminium
consisting of:

- Guide frame (corrosion resistant aluminium profiles) as sliding support for the device column
- Cover support with sealing, pavement frame, drainage, open pipe for surface water drainage
- Bottom support with lifting mechanism (threaded-spindle, spindle-guide and spindle nut)

Device column

Extendable, horizontal case construction out of weather resistant PVC with built-on shift cover of cast aluminium, built-in space of 50 mm for pavement.

The case of insulated material (IP 55) is a self supporting construction and constructed as a rugged and shock resistant device. 2 sides (A+B) are provided for the equipment of the device.

Lead-in by flexible connection cable 4 x 95 mm².

The lifting mechanism with threaded spindle is located in the centre of the device column.

Water-tight-opening of spindle drive through the lid.

Self-regulating heating in the electrical operating room to protect from frost damage and condensation.

Electric device modules

The interior wiring of the devices and the feeding-in are arranged for the TN-C-S system (as per diagram of connections). Wiring for other systems only after technical clarification and written contract.

Side A:

3 pieces	of distribution module with transparent cover for 10 partitions
1 piece	of attached electrical outlet CEE 125A, 5-pole
1 piece	of attached electrical outlet CEE 32A, 5-pole
1 piece	of attached electrical outlet CEE 16A, 5-pole
6 pieces	of electrical earth outlets
1 piece	of elcb 125A, 4-pole, 300mA
1 piece	of elcb 63A, 4-pole, 30mA
1 piece	of mcb 125A, C, 3-pole
1 piece	of mcb 32A, B, 3-pole
1 piece	of mcb 16A, B, 3-pole
5 pieces	of mcb 16A, B, 1-pole
1 pieces	of fuse, D-02, 63A, 3-pole

Side B:

3 pieces	of distribution module with transparent cover for 10 partitions
1 piece	of attached electrical outlet CEE 63A, 5-pole
1 piece	of attached electrical outlet CEE 32A, 5-pole
2 pieces	of attached electrical outlet CEE 16A, 5-pole
6 pieces	of electrical earth outlets
1 piece	of elcb 63A, 4-pole, 30mA
1 piece	of elcb 63A, 4-pole, 300mA
1 piece	of mcb 63A, B, 3-pole
1 piece	of mcb 32A, B, 3-pole
2 pieces	of mcb 16A, B, 3-pole
4 pieces	of mcb 16A, B, 1-pole
1 piece	of mcb 2A, C, 1-pole for heating
1 piece	of fuse, D-02, 63A, 3-pole

Cable connection module KAM 150-1

PVC device supporting base with distributing bar -derivating post 70-150 mm² to feed in or slide on the supply cable. Pre-fuse NH 01 200A and tension relief for the flexible connection cable.

Cable leading on KDF 150-1

Screwing sockets PG 48 with shrink-hose for watertight leading in of the connection cable and of the leading-off cable.

Crank handle

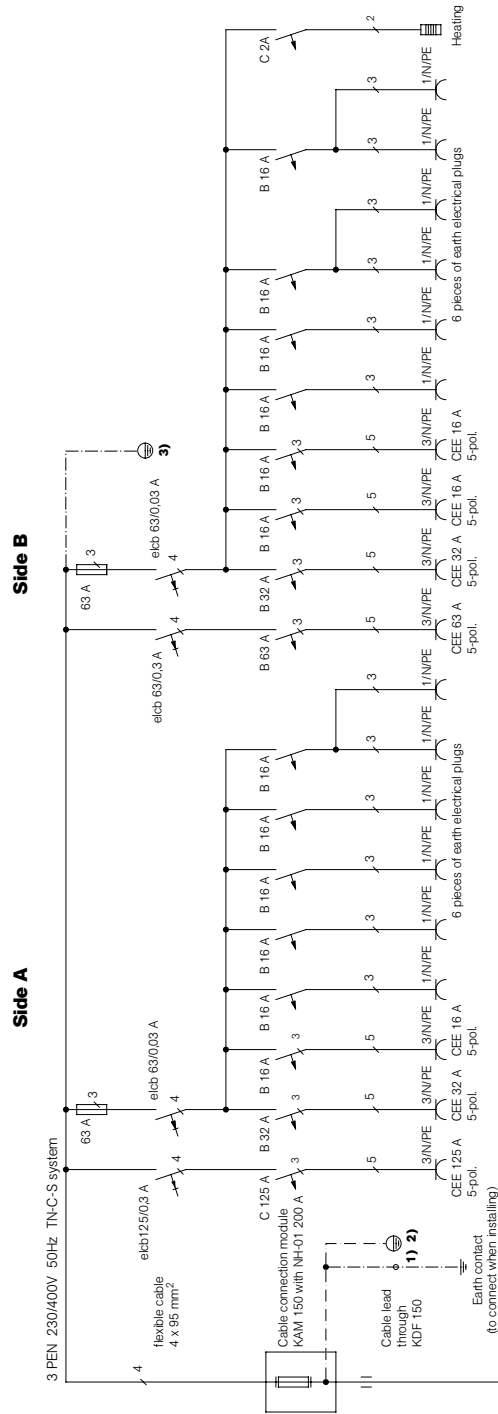
(included in price when ordered)

Price: per piece + VAT

Delivery: assembled completely, completely wired and checked according to VDE 0100 part 610 including electric plans and installation instructions, ex factory, packaging not included

Delivery time: min. 6 weeks after receipt of order and technical clarification

Survey of diagram of connections for retractable supply post MS SE 80 Standard



Lead in cable max. 150 mm² (to provide before installing)

1) M 10 pin (super refined steel) at the outside of concrete shaft

2) Shaft insertion

3) Device column

TB SE 80 Standard- E - 07/2011
 Technical alternations are subject to change without prior notice.
 Our terms of delivery and payment are in validity.

MOSER SYSTEMELEKTRIK
 Erikaweg 1
 D-78141 Schönwald
 Phone 0049(0)77 22/96 97-0
 Telefax 0049(0)77 22/96 97-11
 info@moser-systemelektrik.de
 www.moser-systemelektrik.de

Submitted by: