

## Type description for retractable supply post-hydrant MS SEH 50 Standard



### Technical data

Degree of protection:	IP 44 for electrical sockets, on request up to IP 67 IP 55 for distributors
Protection equipment:	earth conductor, class 1
Mains voltage / frequency:	230/400 V, 50 Hz
Kind of voltage:	TN-S System
Connection value:	ca. 30 kW
Supply cable max. permissible:	5 x 16 mm <sup>2</sup>

### Equipment side A

- 1 x distributor, 13 partitions
- 1 x CEE 32A, 5-pole
- 1 x CEE 16A, 5-pole
- 2 x CEE 16A, 3-pole
- 1 x elcb 63/0,03A, 4-pole
- 1 x mcb 32A, B, 3-pole
- 1 x mcb 16A, B, 3-pole
- 2 x mcb 16A, B, 1-pole
- 1 x mcb 2A, C, 1-pole (for heating)

### Equipment side B

- 1 x high speed clutch  
typ GK 1/2" (fresh water)
- 1 x fresh water shut off valve

### Weights

Concrete shaft + shaft insert:	630 kg
Device column equipped:	65 kg

### Dimensions

Concrete shaft (HxWxD):	795 x 610 x 1036 mm
Cover support (incl. sealing compound):	110 mm
Installation depth:	905 mm
Extendible height:	466 mm
Space for pavement in cover:	50 mm
Load capacity for the paved cover under DIN EN 124:	D 400, 40t point load
Lifting mechanism:	Threaded spindle
Sewage connections:	2 St. DN 40

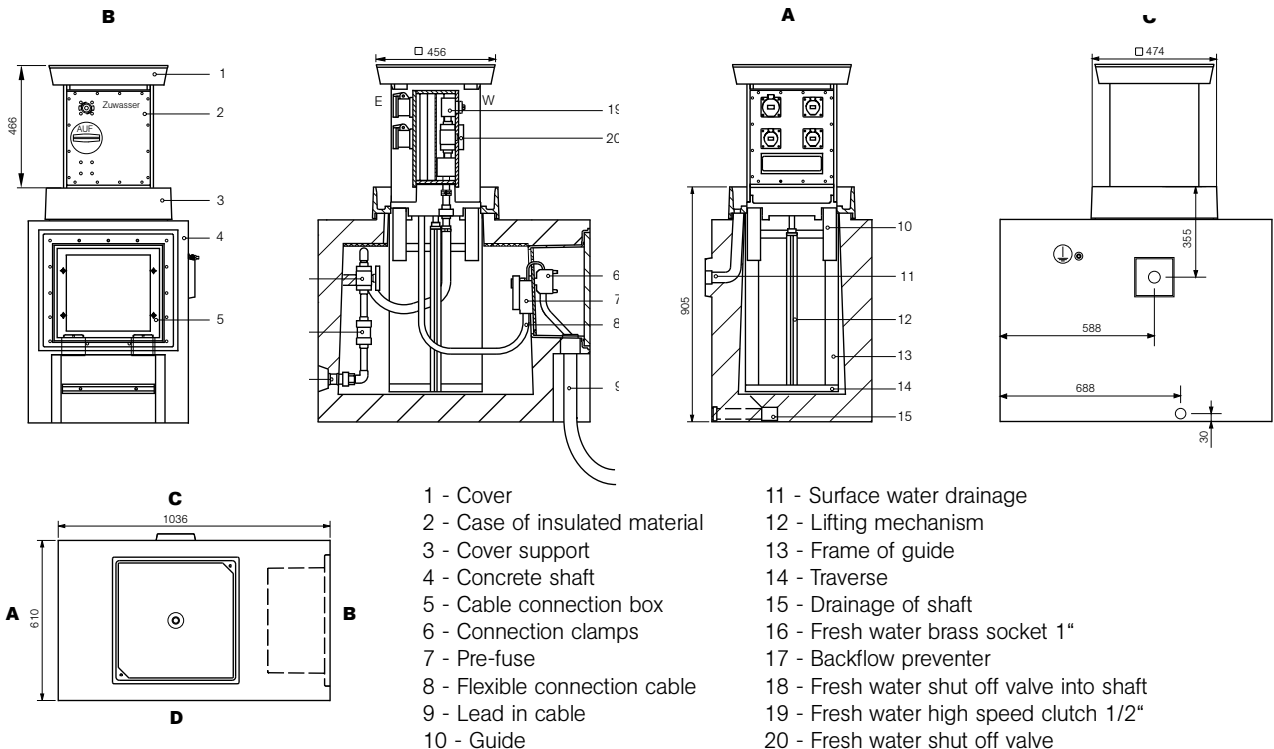
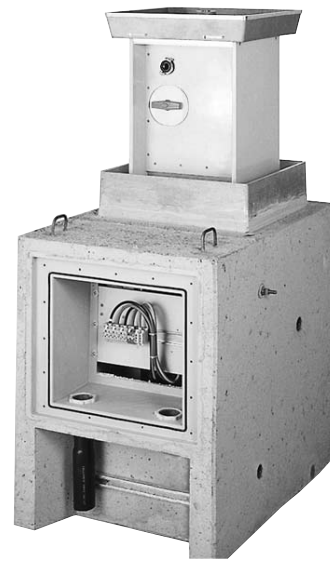
### Order-No.:

**MS SEH 50-Sta-01**

side A



side B



## **Submission text for retractable supply post-hydrant MS SEH 50 Standard**

**Retractable, practicable, column for connection and distribution of electricity and water as per the VDE-regulations for open space, soil flushing installation.  
Load capacity of the paved cover under the provisions of DIN EN 124 - D 400 (40t point load),  
kind of protection IP 44 for electrical sockets, on request up to IP 67,  
kind of protection IP 55 for distributors**

**consisting of:**

### **Concrete shaft**

Supporting concrete shaft under the provisions of DIN 1045 - B 35 (for traffic loads under the provisions of DIN 1072, bridge class SLW 60) for a protected insertion of the retractable supply post into soil.

There are integrated:

- Cable connection box for assembly of a connecting module
- two cable lead throughs for reception of an incoming cable
- C-rail for tension relief for the connection cable
- Thread-connection plug for the installation of the exterior earth contact
- Surface water drainage DN 40
- Shaft drainage DN 40
- Fresh water connection brass socket 1"

### **Shift insertion**

System-oriented, metal insertion of corrosion resistant aluminium consisting of:

- Guide frame (corrosion resistant aluminium profiles) as sliding supports for the device column
- Cover support with sealing, pavement frame, drainage, open pipe for surface water drainage
- Bottom support with lifting mechanism (threaded-spindle, spindle-guide and spindle nut)

### **Device column**

Extendable, horizontal case construction out of weather resistant PVC with built-on shift cover of cast aluminium, built-in space of 50 mm for pavement.

The case of insulated material (IP 55) is a self supporting construction and constructed as a rugged and shock resistant device. 2 sides (A+B) are provided for the equipment of the device.

Lead-in can be plugged by flexible connection cable 5 x 16 mm<sup>2</sup>.

The lifting mechanism with threaded spindle is located in the centre of the device column.

Water-tight opening of spindle drive through the lid.

Self-regulating heating in the electrical operating room to protect from frost damage an condensation.

### **Elektro-Gerätemodule**

Die interne Verdrahtung der Geräte und die Einspeisung sind für das TN-S System ausgebildet (nach Schaltbild). Verdrahtung für andere Systeme nur nach technischer Klärung und schriftlichem Auftrag.

#### Side A:

1 piece	of distribution module with converging for 13 partitions
1 piece	of attached electrical outlet CEE 32A, 5-pole
1 piece	of attached electrical outlet CEE 16A, 5-pole
2 pieces	of attached electrical outlets CEE 16A, 3-pole
1 piece	of elcb 63A, 4-pole, 30mA
1 piece	of mcb 32A, B, 3-pole
1 piece	of mcb 16A, B, 3-pole
2 pieces	of mcb 16A, B, 1-pole
1 piece	of mcb 2A, C, 1-pole

### **Water device module**

#### Side B:

1 piece	of freshwater high speed clutch typ GK 1/2" (connection pressure max. 6 bar / temperature range 0°C to 60°C)
1 piece	of fresh water shut off valve

### **Cable connection module KAM 16-2**

PVC device supporting base with series clamps 10-16 mm<sup>2</sup> for feeding in or slide on the supply cable.  
Pre-fuse NH 0063 A plug-clutch 80 A and tension relief for the flexible connection cable.

### **Cable leading on KDF 16-1**

Screwing sockets M 40 with shrink-hose for watertight leading in of the connection cable and of the leading-off cable.

### **Crank handle**

(included in price when ordered)

**Price:** per piece + VAT

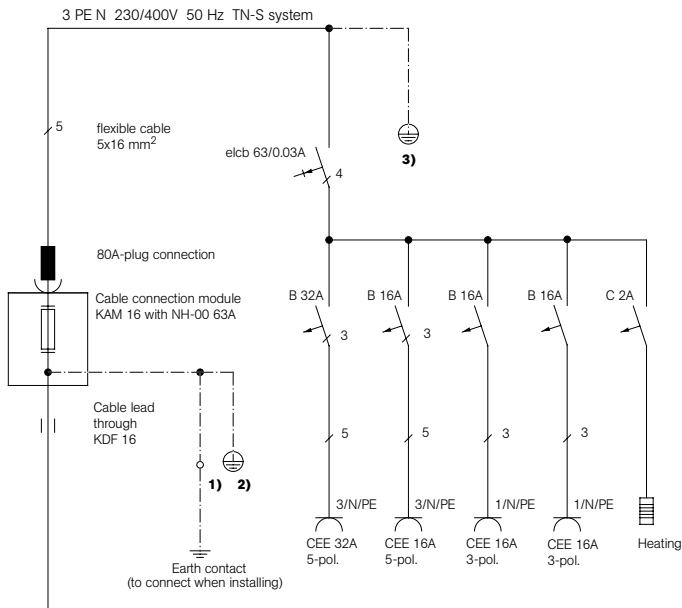
**Delivery:** assembled completely, completely wired and checked according to VDE 0100 part 610 including electric plans and installation instructions.  
ex factory, packaging not included

**Delivery time:** min. 4-6 weeks after receipt of order and technical clarification.

**Survey of diagram of connections for retractable supply post-hydrant MS SEH 50 Standard**



**Side A**



**Side B**

- 1 fresh water connection
- Connection armature at the column:  
1 high speed clutches typ GK 1/2"
- Connection armature at concrete shaft:  
1 brass socket 1"

Submitted by:

TB SEH 50 Standard- E - 07/2011  
 Technical alterations are subject to change without prior notice.  
 Our terms of delivery and payment are in validity.

**Moser Systemelektrik**  
 Erikaweg 1  
 D-78141 Schönwald  
 Telefon 0049(0)77 22/96 97-0  
 Telefax 0049(0)77 22/96 97-11  
 info@moser-systemelektrik.de  
 www.moser-systemelektrik.de