

Type description for retractable supply post-hydrant MS SEH 56 Standard

Technical data

Degree of protection:	IP 44 for electrical sockets IP 55 for distributors
Protection equipment:	earth conductor, class 1
Mains voltage/ frequency:	230/400 V, 50 Hz
Kind of voltage:	TN-S System
Connection value:	approx. 50 kW
Supply cable max. permissible:	5 x 16 mm ²

Equipment side A

- 1 x distributor, 18 partitions
- 1 x CEE 63A, 5-pole
- 1 x CEE 16A, 5-pole
- 3 pieces of isolated ground receptacles
- 1 x elcb 63/0,03A, 4-pole
- 1 x mcb 63A, B, 3-pole
- 1 x mcb 16A, B, 3-pole
- 3 x mcb 16A, B, 1-pole
- 1 x mcb 2A, C, 1-pole (for heating)

Equipment side B

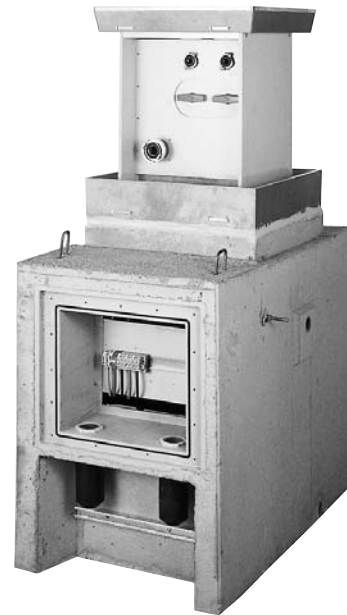
- 2 x high speed clutch
- Type GK 1" (fresh water)
- 2 x ball taps
- (fresh water shut off valve)
- 1 x high speed clutch
- Storz 52-C 2" DIN 14037
- (Sewage)

Weights

Concrete shaft + Shaft insert:	710 kg
Device column equipped:	75 kg

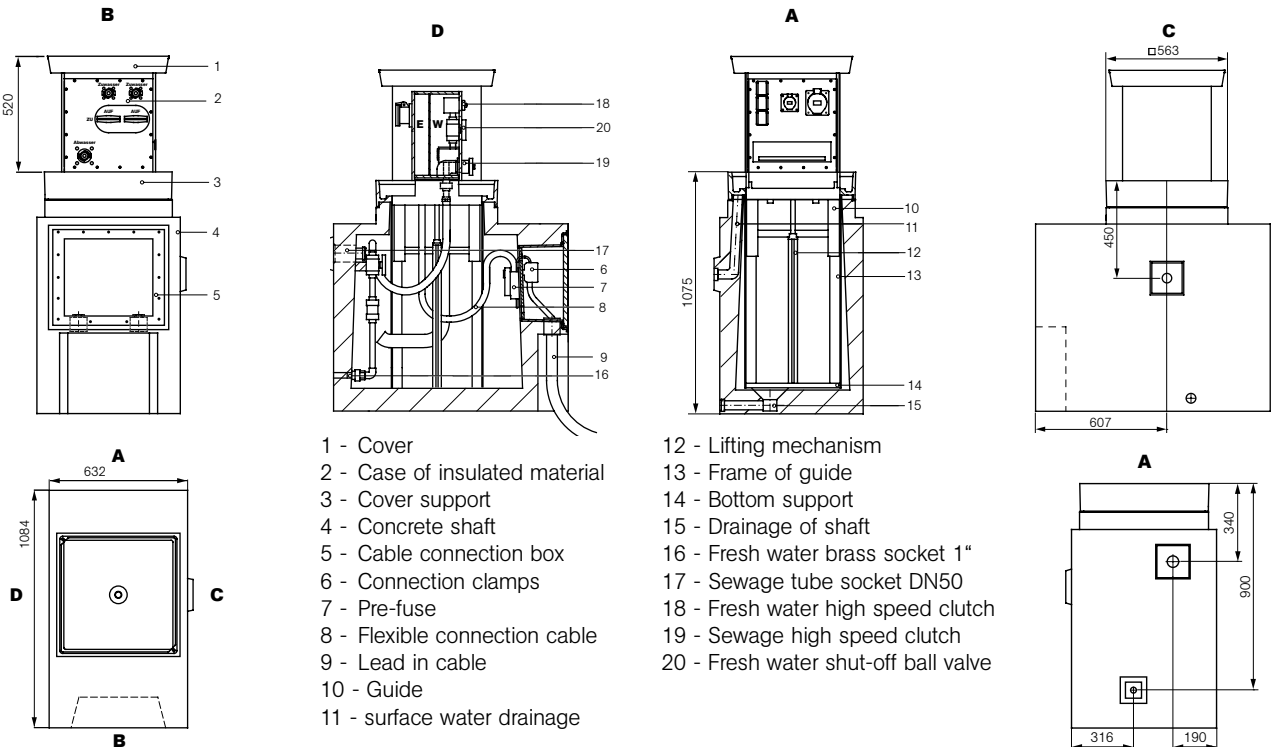
Dimensions

Concrete shaft (H x W x D):	965 x 632 x 1084 mm
Cover support (incl. sealing compound):	110 mm
Installation depth:	1075 mm
Extendible height:	520 mm
Space for pavement in cover:	50 mm
Load capacity for the paved cover under DIN EN 124:	D 400, 40 t point load
Lifting mechanism:	Threaded spindle
Sewage connections:	2 x DN 40



Order-No.

MS SEH 56-Sta-01



Submission text for retractable supply post-hydrant MS SEH 56 Standard

**Retractable, practicable, column for connection and distribution of electricity and water as per the VDE-regulations for open space, soil flushing installation.
Load capacity of the paved cover under the provisions of DIN EN 124 - D 400 (40t point load),
kind of protection IP 44 for electrical sockets, on request up to IP 67,
kind of protection IP 55 for distributors**

consisting of:

Concrete shaft

Supporting concrete shaft under the provisions of DIN 1045 - B 35 (for traffic loads under the provisions of DIN 1072, bridge class SLW 60) for a protected insertion of the retractable supply post into soil.

There are integrated:

- Cable connection box for assembly of a connecting module
- two cable lead throughs for the reception of an incoming cable
- C-rail for tension relief of the connection cable
- Thread-connection plug for the installation of the exterior earth contact
- Surface water drainage DN 40
- Shaft drainage DN 40
- Sewage connection DN 50
- Fresh water connection brass socket 1"

Shift insertion

System-oriented, metal insertion of corrosion resistant aluminium
consisting of:

- Guide frame (corrosion resistant aluminium profiles) as sliding supports for the device column
- Cover support with sealing, pavement frame, drainage, open pipe for surface water drainage
- Bottom support with lifting mechanism (thread-spindle, spindle-guide and spindle nut).

Device column

Extendable, horizontal case construction of weather resistant PVC with built on shift cover of cast aluminium, built-in space of 50 mm for pavement.

The case of insulated material (IP 55) is a self supporting construction and constructed as a rugged and shock resistant device. 2 sides (A+B) are provided for the equipment of the device.

Lead-in can be plugged by flexible connection cable 5 x 16 mm².

The lifting mechanism with threaded spindle is located in the centre of the device column.

Water-tight opening of spindle drive through the lid.

Self-regulating heating in the electrical operating room to protect from frost damage an condensation.

Electric device modules

The interior wiring of the devices and the feeding-in are arranged for the TN-S system (as per diagram of connections).
Wiring for other systems only after technical clarification and written contract.

Side A:

- 1 piece of distribution module with covering for 18 partitions
- 1 piece of attached electrical outlet CEE 63A, 5-pol.
- 1 piece of attached electrical outlet CEE 63A, 5-pol.
- 3 pieces of electrical earth outlets
- 1 piece of elcb 63A, 4-pol., 30mA
- 1 piece of mcb 63A, B, 3-pol.
- 1 piece of mcb 16A, B, 3-pol.
- 3 pieces of mcb 16A, B, 1-pol.
- 1 piece of mcb 2A, C, 1-pol. for heating

Water device module

Side B:

- 2 pieces of Freshwater high speed clutch Type GK 1"
(connection pressure max. 6 bar / temperature range 0°C to 60°C)
- 2 pieces of fresh water shut off valve
- 1 piece of sewage high-speed clutch type Storz 52-C 2" DIN 14037

Cable connection module KAM 16-2

PVC device supporting base with series clamps 10-16 mm² for feed in or slide on the supply cable.
Pre-fuse NH 0063A plug-clutch 80A and tension relief for the flexible connection cable.

Cable leading on KDF 16-1

Screwing sockets PG 29 with shrink-hose for watertight leading in of the connection cable and of the leading-off cable.

Crank handle

(included in price when ordered)

Price: per piece + VAT

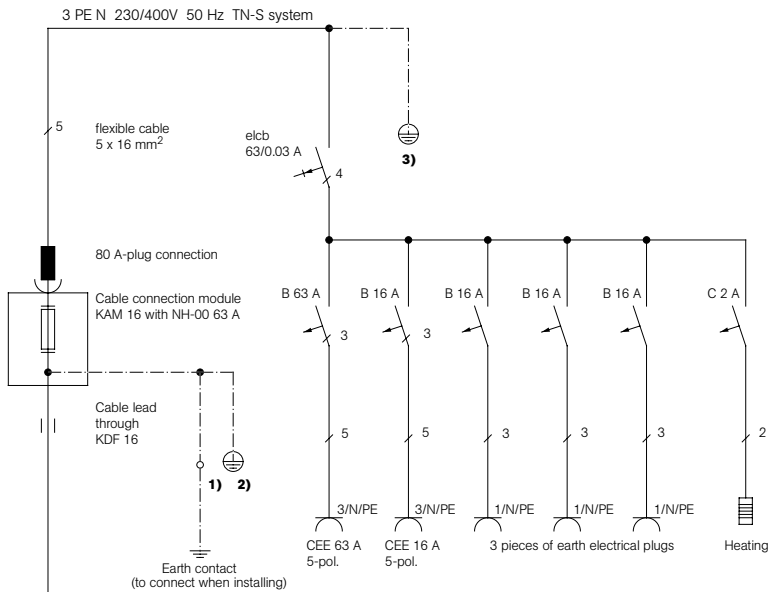
Delivery: assembled completely, completely wired and checked according to VDE 0100 part 610 including electric plans and installation instructions.
ex factory, packaging not included

Delivery time: min. 6 weeks after receipt of order and technical clarification.

Survey of diagram of connections for retractable supply post-hydrant MS SEH 56 Standard



Side A



Lead in cable max. 16 mm² (to provide before installing)

1) M 10 pin (super refined steel) at the outside of concrete shaft

2) Shaft insertion

3) Device column

Side B

- 1 piece of fresh water connection
- Connection armature at the column:
- 2 pieces of high speed clutches type GK 1"
- Connection armature at concrete shaft:
- 1 piece of brass socket 1"

- 1 piece of sewage connection
- Connection armature at the column:
- 1 piece of high speed clutch
- Type Storz 52-C 2" DIN 14037
- Connection armature at concrete shaft :
- 1 piece of brass socket DN 50

Submitted by:

TB SEH 56 Standard- E - 07/2011
 Technical alterations are subject to change without prior notice.
 Our terms of delivery and payment are in validity.

Moser Systemelektrik
 Erikaweg 1
 D-78141 Schönwald
 Telefon 0049(0)77 22/96 97-0
 Telefax 0049(0)77 22/96 97-11
 info@moser-systemelektrik.de
 www.moser-systemelektrik.de